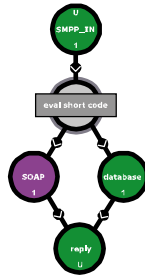
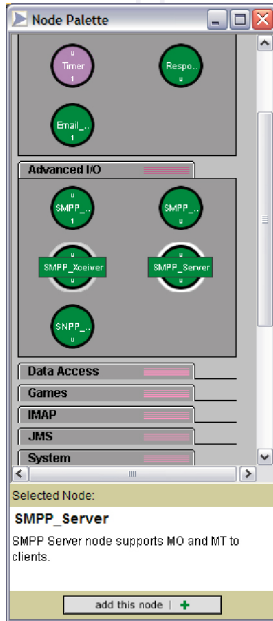


INTRODUCING DATA BOW

Rapidly create and deploy custom services for wireless devices

A full palette of capabilities...

DataBow's graphical authoring tool includes pre-made components enabling SMPP, SMTP, and WAP devices to access databases, SOAP services, shell scripts, JMS, etc. Use the simple Java API to add your own specialized components. Capitalize on the Java Messaging Service (JMS) for multi-server load balancing and failover.

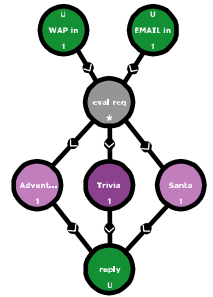


Information lookup services...

Creating customized pull services is a snap using DataBow. Simply connect a client-input node to a little service logic. E.g., an application could receive SMPP text message requests and return a database or SOAP value based on the message's short code.

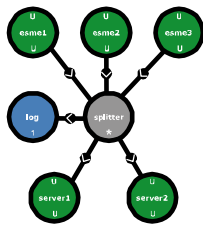
Mobile Entertainment...

OpenPath Products provides ready-to-run gaming engines that integrate with DataBow as nodes. Trivia, interactive adventures, virtual personalities, and other entertainment services can be deployed for WML, XHTML 2-way SMS, and MMS clients.



SMS Routing and Aggregation...

DataBow includes SMPP ESME and SMSC modules, so it can act as both SMS client and server. Using DataBow's custom service logic tools, carriers and portals can connect multiple application providers to multiple SMSCs and define how the routing will occur.



The wireless services You want...

DataBow is designed to give You the flexibility to design and deploy the services that your customers want.

OpenPath Products can create and manage these wireless services for you or support your own technical staff as required.

DATA BOW



Please contact OpenPath Products for further information on DataBow.
OpenPath Products may be contacted at:

410.263.1962 (Phone)

410.263.7412 (Fax)

info@openpathproducts.com

DataBow can access:

- IMAP Email accounts
- SQL Databases
- HTTP Content
- SOAP Servers
- Customized User Profiles
- Operating System Calls
- Telnet Servers
- Screen Scraping
- Custom functionality through the API

DataBow includes:

- A graphical wireless RAD authoring tool
- A fast and friendly Java API
- Web-based simulators for testing wireless services
- An integrated web server with JSP and servlet support
- An integrated SQL database
- An integrated messaging-based architecture
- Interoperability with external databases, web servers, and messaging servers
- Simple installation and configuration
- Support for live service reconfiguration
- Multi-platform support: operates on NT, Linux, Solaris

Client protocol support:

- SMS via SMPP 3.3. and 3.4 (Server and Client)
- SMS via SMTP (Server and Client)
- SMS via SNPP
- WAP WML Browsers
- WAP XHTML Browsers
- MMS Clients
- more

In this quickly changing market where innovation and speed determine the winners, DataBow swiftly and accurately helps you hit your wireless goals.

